

Prepared for



CR 545 (Avalon Road) South US 192 to Hartzog Road

Project Development and Environment (PD&E) Study

PUBLIC INVOLVEMENT PLAN

APRIL 2026

Submitted by



TABLE OF CONTENTS

AVALON ROAD PROJECT ENVIRONMENTAL IMPACT REPORT (PEIR) _____ 3

- 1. INTRODUCTION _____ 4
 - 1.1 Project History _____ 4
 - 1.2 Project Overview _____ 4
- 2. PROJECT CONTACT INFORMATION _____ 6
- 3. IDENTIFICATION OF STAKEHOLDERS _____ 6
- 4. PUBLIC OUTREACH ACTIVITIES _____ 8
- 5. TITLE VI / NONDISCRIMINATION _____ 9
 - 5.1 Special Accommodations for Persons with Disabilities _____ 9
 - 5.2 Limited English Proficiency _____ 10
- 6. PUBLIC INVOLVEMENT SUMMARY _____ 10

Figures

Figure 1. Project Location Map _____ 5

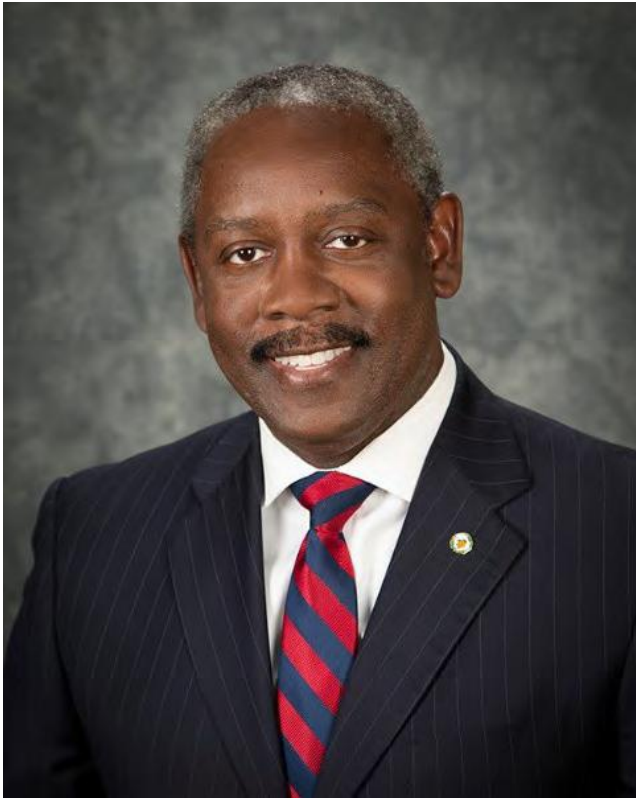
Tables

Table 1. Project Contact Information _____ 6



AVALON ROAD PROJECT ENVIRONMENTAL IMPACT REPORT (PEIR)

On behalf of Orange County Mayor Jerry L. Demings and District 1 County Commissioner Nicole H. Wilson, Orange County presents this Public Involvement Plan (PIP) to guide the public outreach efforts for the conversion of the Avalon Road Roadway Conceptual Analysis (RCA) to a Project Development and Environmental (PD&E) Study and Project Environmental Impact Report (PEIR) to support and document compliance with state and federal environmental laws.



*Jerry L. Demings
Orange County Mayor*



*Nicole H. Wilson
Orange County District 1 Commissioner*

1. INTRODUCTION

Orange County Government has begun the design phase for widening approximately 1.6 miles of CR 545 (Avalon Road) from US 192 to Hartzog Road (see **Figure 1**).

1.1 Project History

Orange County completed a Roadway Conceptual Analysis (RCA) for the project in 2024. The County is currently conducting a Project Development and Environment (PD&E) Study and converting the RCA to a Project Environmental Impact Report (PEIR) to support and document compliance with state and federal environmental laws. This Public Involvement Plan (PIP) is an update to the 2024 PIP and serves as a framework for engaging stakeholders, with a particular focus on communities adjacent to the project area. The County's primary goal is to actively involve residents, agencies, interest groups, and the public throughout the PD&E process.

The PIP provides the framework for outreach, ensuring it aligns with Orange County's principles and complies with Title VI requirements and all applicable federal and state regulations, as well as Orange County ordinances, codes, and policies.

The strategies outlined in the PIP ensure stakeholders have opportunities to stay informed and participate. This plan details the approach taken to achieve an appropriate level of public engagement for the Avalon Road PD&E. The process is designed to educate the public about the design effort and provide consistent opportunities for input and involvement.

A summary of public involvement activities will be included in the final Avalon Road PEIR.

1.2 Project Overview

The proposed project includes widening the existing two-lane roadway to four 12-foot travel lanes with curb and gutter, a 22-foot raised median, a six-foot-wide sidewalk on the east side of the roadway, and a 10-foot-wide multi-use path on the west side to accommodate pedestrians and bicyclists. These facilities will be separated from the roadway by a grass utility strip and will connect to planned regional pedestrian and bicycle facilities north of Hartzog Road. Pedestrian features, including crosswalks and pedestrian signals, will be provided at US 192, which is the only signalized intersection within the project limits. All facilities will comply with the American with Disabilities Act (ADA).

This project is being designed to minimize, to the extent possible, right-of-way impacts to adjacent existing and planned developments. The Preferred Alternative accommodates projected future traffic demands, improves roadway operations and safety, and incorporates stormwater management features designed to meet South Florida Water Management District (SFWMD) and Orange County requirements. Three stormwater management ponds and a floodplain compensation site are planned to provide water quality treatment and runoff attenuation while avoiding impacts to nearby wetlands and floodplain areas, where feasible.

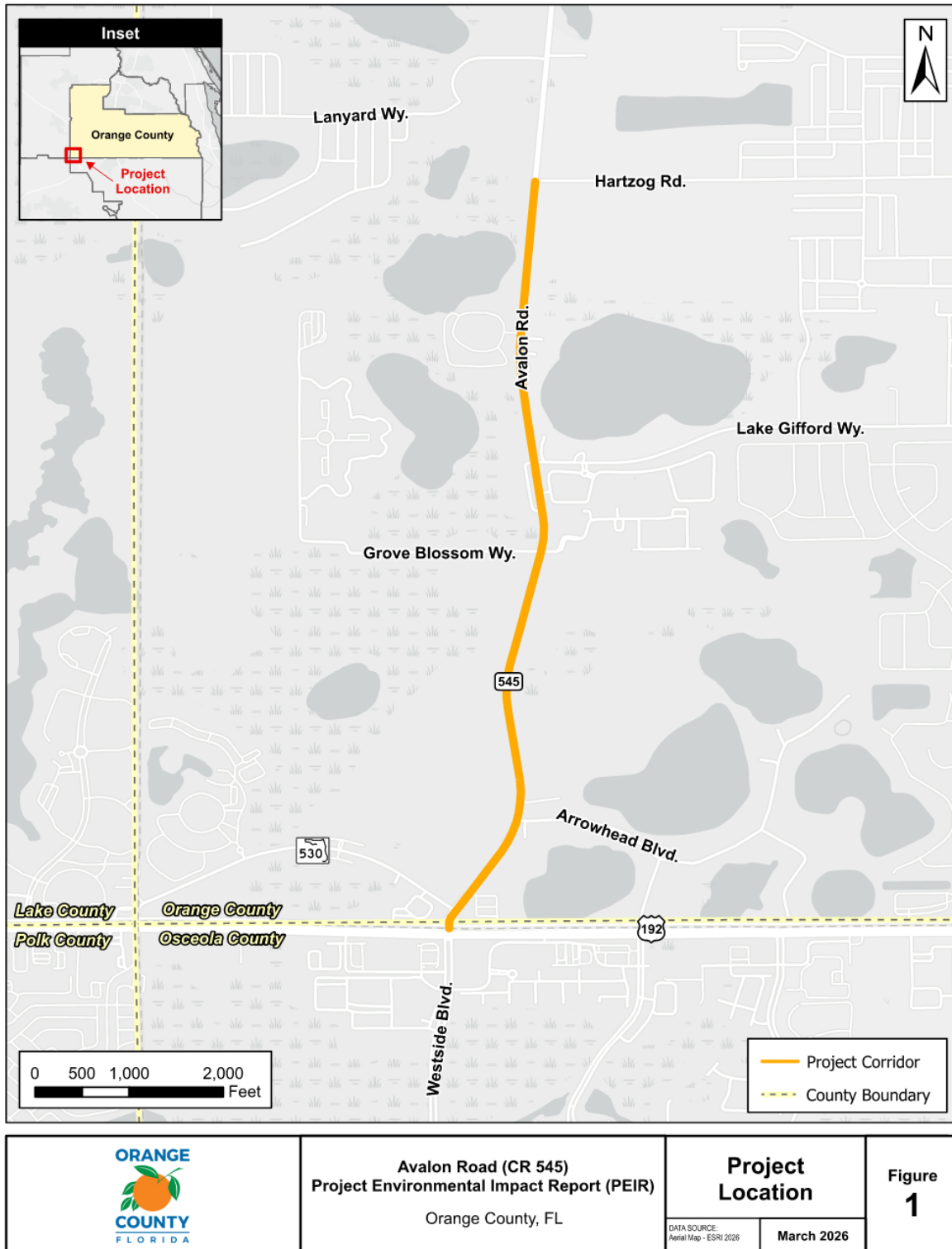


Figure 1. Project Location Map



2. PROJECT CONTACT INFORMATION

The project contacts for the Avalon Road PEIR are provided below:

Table 1. Contact Information

County Project Manager	Cathy Evangelo, P.E., Senior Engineer Orange County Public Works Department 4200 South John Young Parkway Orlando, FL 32839 (407) 836-8034 Cathy.Evangeloc@ocfl.net
County Contact (Español)	Esther Fernandez Canizares, Engineer II Orange County Public Works Department Engineering Division 4200 S. John Young Parkway Orlando, FL 32839 407-836-7982 Esther.Fernandez@ocfl.net

3. IDENTIFICATION OF STAKEHOLDERS

A stakeholder database that includes elected and appointed officials, county departments, agencies, community organizations, advocacy groups, major businesses, property owners, and other interested parties was updated from the original RCA for this PEIR.

Information will be shared with stakeholders, including study updates and hearing notifications. The County will also implement strategies to reach underserved and underrepresented populations, if necessary, by partnering with service providers to post hearing announcements at designated corridor locations.

Elected & Appointed Officials

- Orange County Board of County Commissioners, Commissioner Nicole Wilson (District 1)
- Orange County Planning and Zoning Commissioners
- Orange County School Board
- MetroPlan Orlando Board
- LYNX Board of Directors
- State Representative Jennifer "Rita" Harris (District 44)
- State Senator LaVon Bracy Davis (District 15)
- US Congressman Maxwell Frost (10th Congressional District)
- US Senators Rick Scott and Ashley Moody

Orange County Departments

- Orange County Environmental Protection Department (EPD)
- Planning, Environmental, and Development Services (PEDS) Department
 - Department Director



- Transportation Planning Manager
- Planning Manager
- Environmental Protection Manager
- Neighborhood Manager
- Public Works Department
 - Director
 - Deputy Director
 - Transportation Planning Manager
 - Chief Planner
 - Engineering Manager
 - Traffic Engineering Manager
 - Highway Construction Manager
 - Development Engineering Manager
 - Roads & Drainage Manager
 - Stormwater Management Manager
- Orange County Utilities
- Orange County Administrator's Office
- Orange County Attorney's Office
- Orange County Public Information Office
- Orange County Fire Rescue
- Orange County Sheriff John W. Mina
- Orange County Parks and Recreation

Other Agencies

- Florida Department of Transportation (FDOT) District Five
- Florida Department of Environmental Protection (FDEP)
- Florida Fish & Wildlife Conservation Commission (FFWCC)
- LYNX
- MetroPlan Orlando
- Orange County Public Schools (OCPS)
- South Florida Water Management District (SFWMD)
- U.S. Army Corps of Engineers (USACOE)
- U.S. Fish and Wildlife Service (USFWS)
- Regional Power Providers
- Osceola County

Community Interests, Assets, and Advocacy Groups

- Bike/Walk Central Florida
- Yes in My Backyard (YIMBY Orlando)
- Florida Trail Association - Central Florida Chapter
- 1000 Friends of Florida
- Orange County's Walk-Ride-Thrive! Initiative
- Homeowners Associations
- Gilead Church

Schools

- None Identified

Parks

- Winding Bay Preserve

Major Businesses

- AdventHealth Four Corners ER
- Wawa
- Jodi's Ski Skool
- RockWell Homes - Winding Bay
- Rhino Commercial Cleaning
- McDonald's
- Jersey Mike's Subs
- ZENSHI Handcrafted Sushi
- Publix Super Market at Waterleigh Village

Housing Apartments

- Palisades Condominium
- Integra Avalon Apartments
- Winding Bay Community
- Lennar at Storey Grove
- Solay Horizon West Apartments
- Vintage Hills Way Apartments
- M/I Homes Tribute at Ovation

Property Owners

Property owners within 275 feet of each side of the right-of-way along the corridor.

4. PUBLIC OUTREACH ACTIVITIES

The following outreach efforts will be employed during the project to notify key stakeholders and the affected public of the study and to solicit public input into the process.

Project Website – The County previously developed a project website for the Avalon Road RCA <https://www.orangecountyfl.net/TrafficTransportation/TransportationProjects/CR545AvalonRdRCA.aspx>. The website will be updated with project information, including a location map, notification flyer, project designs, PEIR, and other supporting project documents.

Study Newsletters – An updated newsletter will be issued to share PD&E Study updates and announce a scheduled (May 2026) public hearing.

The newsletter will serve as a flyer to be distributed electronically to identified stakeholders, mailed to property owners within the project study area (21 days prior to hearing), and posted on the project website.

Media Contact – Orange County’s Public Information Officer will serve as the primary point of contact for all media inquiries, including coordination with local newspapers and social media. Study-specific information will be provided by the study team to the County’s Public Information Officer for the preparation of press releases, media interviews, and news articles.

Public Hearing – A formal public hearing will be conducted to present the PD&E Study findings/PEIR document. The PEIR will be available for public review on the project website and the County Public Works Building at least 21 calendar days prior to the hearing (May 5, 2026). The hearing will be held in concurrence with a regularly scheduled Orange County Board of County Commissioners meeting.

Public notification materials, including newspaper advertisements and press releases, will be prepared to inform the community of the scheduled hearing. The County will publish newspaper notices in the Orlando Sentinel and El Sentinel (English and Spanish). All notices will include the hearing date, time, location, procedures, and agenda topics. Notices will be issued at least two (2) weeks prior to the hearing.

The public may provide written or verbal comments to the contacts noted previously during the public document review period. The public hearing will include a formal presentation by the project team, followed by a structured comment period. The public comment period will close following the conclusion of the public hearing. Written comments may be submitted prior to the hearing. The County will prepare written responses to all individuals or groups who submit comments or questions.

5. TITLE VI / NONDISCRIMINATION

This project is conducted in compliance with Title VI of the Civil Rights Act of 1964, 42 U.S.C. § 2000d et seq. (Title VI, and related laws and regulations), applicable federal and state regulations, and Orange County policies to promote outreach to underserved and underrepresented populations, as summarized in the following sections.

5.1 Special Accommodations for Persons with Disabilities

The Americans with Disabilities Act (ADA) of 1990 is a civil rights statute that prohibits discrimination against those with disabilities. Notification of Orange County’s intent to comply with the ADA will be provided in the public hearing notification, newsletters/notification flyer, and public hearing materials/presentation.

The County is committed to ensuring that its facilities, programs, services, and activities are accessible to individuals with disabilities. The public is encouraged to report on any facility, program, service, or activity that may be inaccessible. The County will provide reasonable accommodation to individuals with disabilities who wish to participate in public involvement activities or require assistance to access County services or facilities. To allow sufficient time for coordination, accommodation requests should be submitted at least seven (7) calendar days in advance.

Questions, concerns, comments, or accommodation requests will be directed to the County's ADA Coordinator:

Nicola Norton

County ADA Coordinator

Email: Norton@ocfl.net

Phone: (407) 836-6568

Hearing Impaired: Florida Relay 7-1-1

5.2 Limited English Proficiency

Title VI of the Civil Rights Act of 1964 requires recipients of Federal financial assistance, such as Orange County, to take reasonable steps to make their programs, services, and activities accessible to eligible persons with limited English proficiency (LEP). LEP specifically refers to the population of the study area where English is not the primary language. This segment of the population has difficulty communicating effectively in English and may need an interpreter or document translation to provide meaningful project input.

People who require language translation or interpretation services, which are provided at no cost, should contact Orange County Human Resources, at least seven (7) days prior to the hearing:

Email: HumanResources@ocfl.net

Phone: (407) 836-5661

6. PUBLIC INVOLVEMENT SUMMARY

All hearing comments, questions, and responses will be documented in a *Comments and Coordination Report* following comment period closeout. The report will include copies of hearing exhibits materials, the presentation, public comments/questions, and responses. The report will be incorporated by reference into the Avalon Road PEIR.